

Network interface type CS141

3 109 30 - 3 109 31 - 3 109 32 - 3 109 33 - 3 109 34 - 3 109 35

CS141 Standard



3 109 33 - CS141B

CS141 Professional

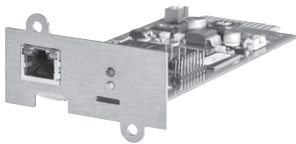


3 109 32 - CS141

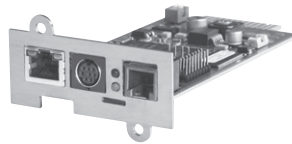
CS141 Industrial



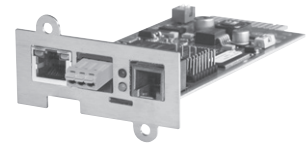
3 109 34 - CS141M



3 109 31 - CS141B SK



3 109 30 - CS141 SK



3 109 35 - CS141M SK

1. FEATURES

- **High-Tech made in Germany and in the USA**

ARM Cortex A8 processor, 10/100 Mbit auto-sensing Ethernet, 2 serial RS232 interfaces (not in the "Standard" version). The "Industrial" version of the device is available with a MODBUS RS485 instead of the RS232 interface.

- **Graphical interfaces**

Several options are available for monitoring and configuring the CS141: internet browsers, every type of SNMP network management station and UNMS II. The statistical analysis of all connected devices are graphically shown through the web browser. Those statistics show the values of the UPS and all connected external devices like temperature, humidity, etc. Firmware updatable via drag & drop.

- **Data logging**

Measurement values and alarms are written with time stamps into the non-volatile storage of the CS141 adapter. The time synchronization function through NTP insures that all protocols are written with precise time values.

- **Scheduler**

Web server based scheduler allows scheduled on/off of the UPS output, send shutdown commands or start battery tests. This secures that the UPS runs regularly battery tests and informs the user about problems via email, log file, etc.

- **Email / SMS**

The integrated email client via SMTP can be configured to relay either all or only specific messages. The email client can use public email servers and local email servers to distribute the information.

- **Email Trap for UNMS II Remote Monitoring Software**

Every CS141 can send its data packages via "Email Trap" to the UNMS II Software with TELESERVICE optional module. Thereby you can arrange a remote monitoring via email, without compromising the customers network security systems. All measuring values and graphics are visible on the UNMS II at any time.

- **Multi Server Shutdown**

Unlimited shutdown manager for RCCMD clients - for more than 40 different operating systems. This makes it possible for a CS141 adapter to inform and shutdown any type of computer in a given network which can then be used to centralize the administration of large networks while greatly reducing both the amount of administrative work and the amount of network traffic. Different methods are available for conducting shutdowns and system start UPS:

- RCCMD: the operating systems are prompted to shutdown or restart
- Wake on LAN: the computers in a local network are prompted to start-up.

- **Network Services**

The CS141 supports SNMP v2 and v3, IPv4 and IPv6, HTTP, HTTPS, DNS, DHCP, SMTP, NTP, SFTP, UPSTCP (UNMS), MODBUS over IP, MODBUS over RS232/485 and RCCMD (Multi-server and Multi-OS shutdown / messaging tool).

- **SNMP v2 and v3**

The CS141 supports the RFC1628 MIB (standard UPS MIB) and MIB extensions for use with the temperature/humidity sensors and with the SensorManager II device. This enables the CS141 adapter to make all of its gathered information from other devices available via SNMP. All SNMP based network management systems are supported.

- **MODBUS**

All of the CS141 adapters are equipped with MODBUS over IP, which enables the CS141 to incorporate PLC devices or any other MODBUS based management system. The "Professional" version also provide MODBUS RS232. The "Industrial" version also provide MODBUS RS485.

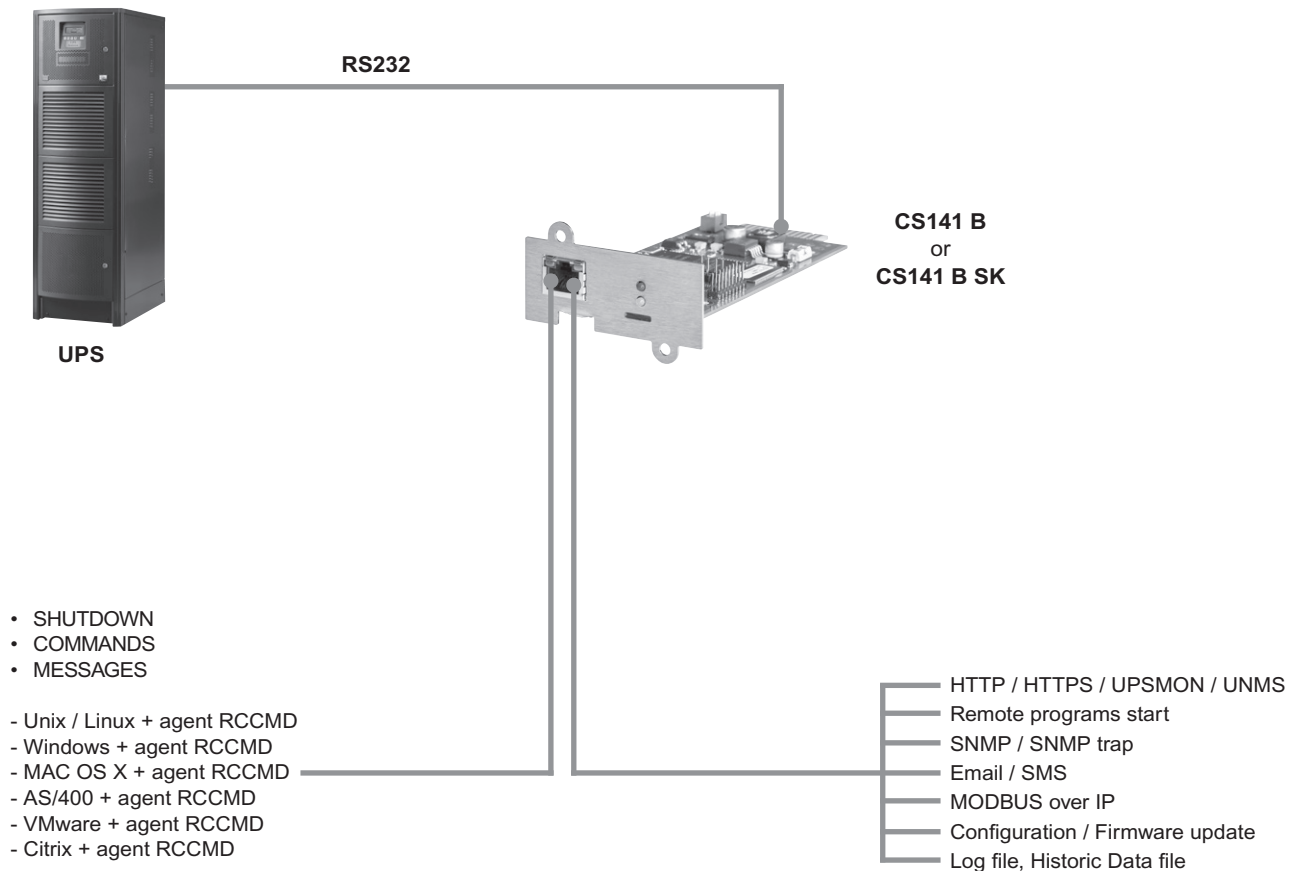
- **GSM Modem**

Support for GSM modem through COM2 for transmitting SMS text message and through IP for the remote monitoring and administration of the UPS. The function makes administration of the UPS system possible without compromising the security of the network it is servicing.

Network interface type CS141

3 109 30 - 3 109 31 - 3 109 32 - 3 109 33 - 3 109 34 - 3 109 35

2. FUNCTION OVERVIEW OF THE CS141 STANDARD



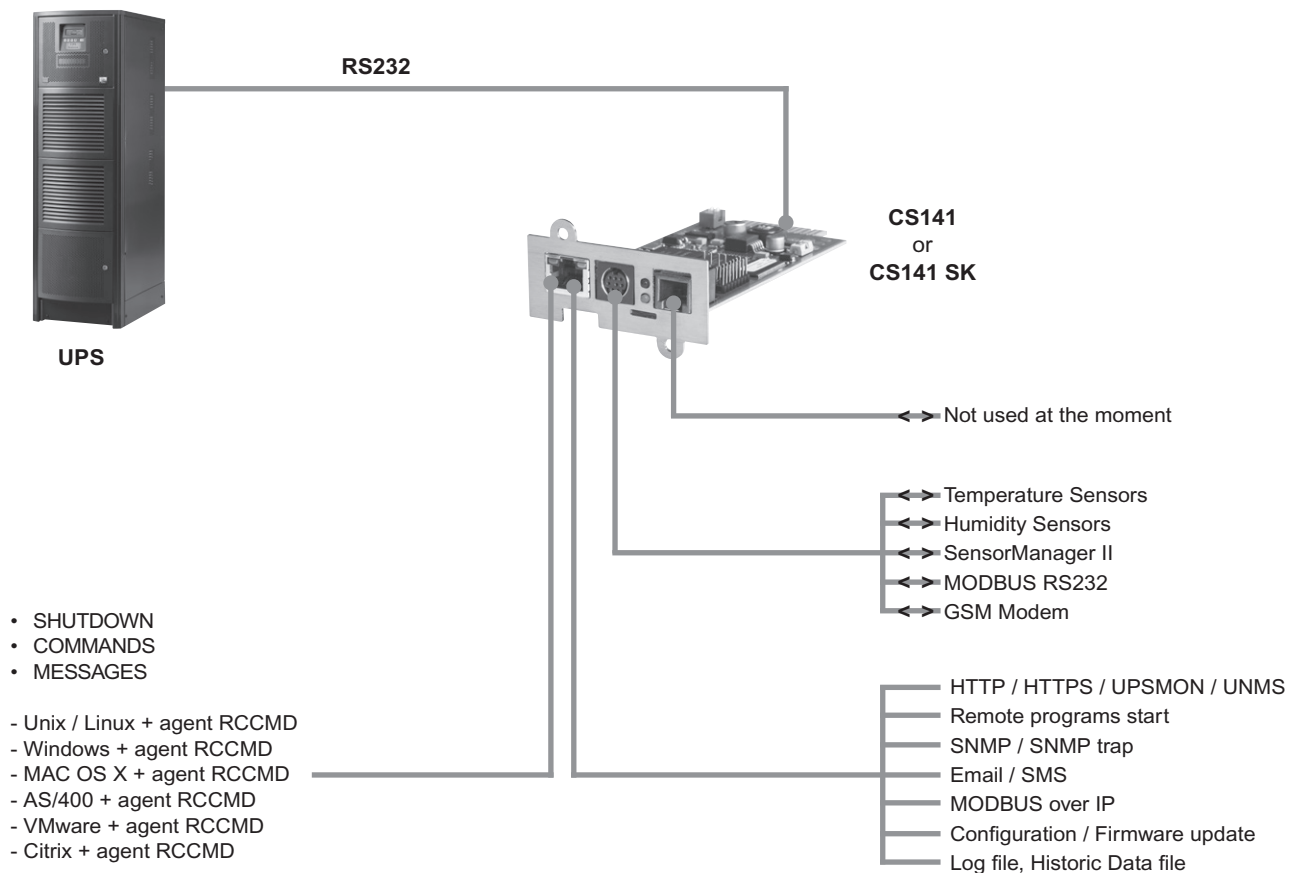
3. TECHNICAL DATA OF THE CS141 STANDARD

| Technical data | CS141B (external version) | CS141B SK (internal version) |
|--------------------------------------|------------------------------------|------------------------------------|
| Power supply | 12V (min. 9V, max 30 V DC), 150 mA | 12V (min. 9V, max 30 V DC), 150 mA |
| Size (W x D x H), Weight | 69 x 126 x 35 mm, 210 g | 60 x 120 x 29 mm, 66 g |
| Ethernet | 10/100 Mbit Base-T auto sense | 10/100 Mbit Base-T auto sense |
| RS232 interface | 1 | 1 |
| USB interface | 1 | - |
| MODBUS over IP | Yes | Yes |
| Status LED's | Normal green, boot/error led | Normal green, boot/error led |
| SNMP MIB support | RFC 1628 and private extensions | RFC 1628 and private extensions |
| Operating temperature | 0 ÷ 70 °C | 0 ÷ 70 °C |
| Storage temperature | 0 ÷ 70 °C | 0 ÷ 70 °C |
| Max. recommended ambient temperature | 55 °C | 55 °C |
| Humidity | 20 ÷ 95 °C, not condensated | 20 ÷ 95 °C, not condensated |
| CPU | ARM Cortex A8 800 MHz | ARM Cortex A8 800 MHz |
| Flash memory | 512 MB | 512 MB |
| Access memory | 128 MB DDR3 RAM | 128 MB DDR3 RAM |
| Certification | CE, UL / NEMKO | CE, UL / NEMKO |

Network interface type CS141

3 109 30 - 3 109 31 - 3 109 32 - 3 109 33 - 3 109 34 - 3 109 35

2. FUNCTION OVERVIEW OF THE CS141 PROFESSIONAL



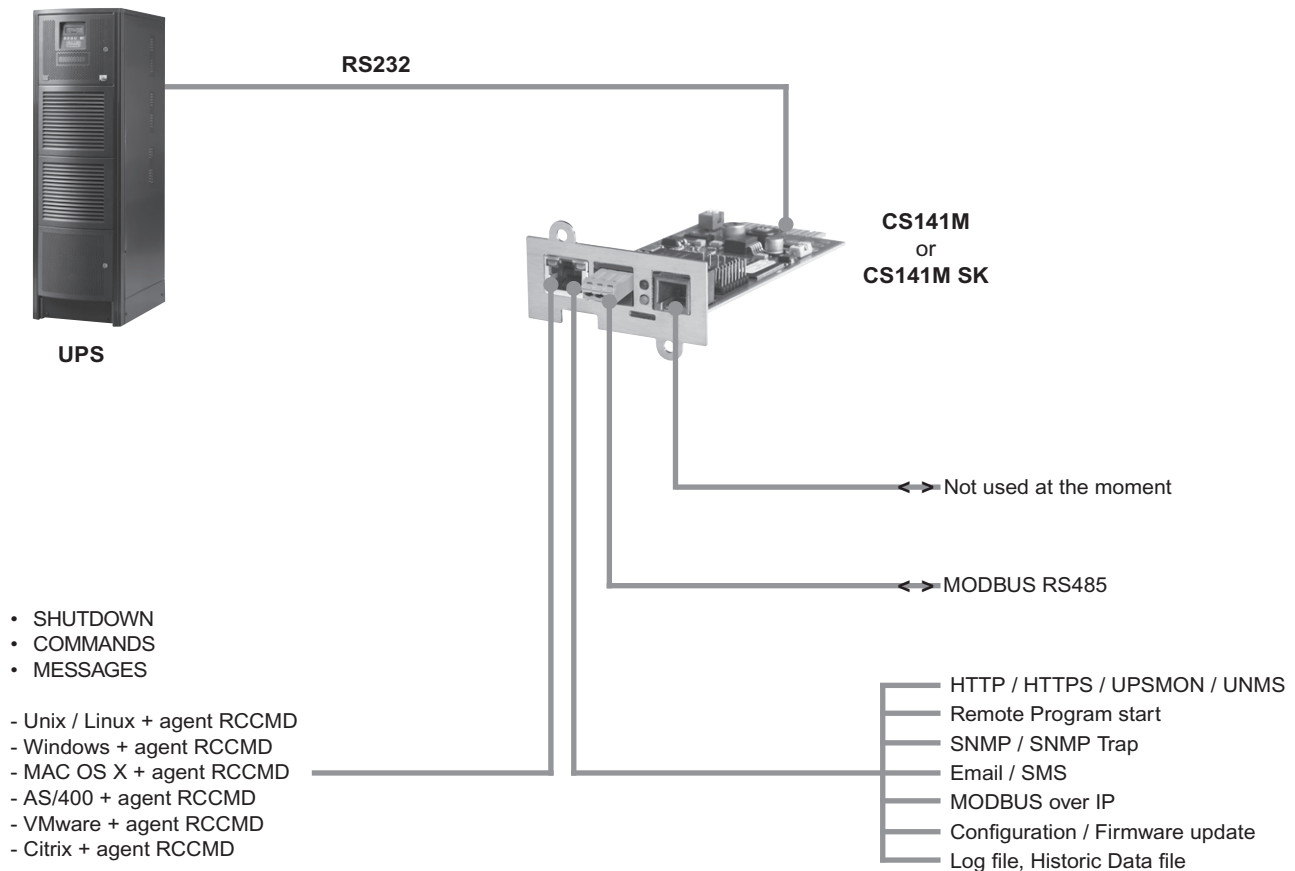
3. TECHNICAL DATA OF THE CS141 PROFESSIONAL

| Technical data | CS141 (external version) | CS141 SK (internal version) |
|--------------------------------------|------------------------------------|------------------------------------|
| Power supply | 12V (min. 9V, max 30 V DC), 150 mA | 12V (min. 9V, max 30 V DC), 150 mA |
| Size (W x D x H), Weight | 69 x 126 x 35 mm, 210 g | 60 x 120 x 29 mm, 66 g |
| Ethernet | 10/100 Mbit Base-T auto sense | 10/100 Mbit Base-T auto sense |
| RS232 interface | 2 | 2 |
| USB interface | 1 | - |
| MODBUS over IP | Yes | Yes |
| Status LED's | Normal green, boot/error led | Normal green, boot/error led |
| SNMP MIB support | RFC 1628 and private extensions | RFC 1628 and private extensions |
| Operating temperature | 0 ÷ 70 °C | 0 ÷ 70 °C |
| Storage temperature | 0 ÷ 70 °C | 0 ÷ 70 °C |
| Max. recommended ambient temperature | 55 °C | 55 °C |
| Humidity | 20 ÷ 95 °C, not condensated | 20 ÷ 95 °C, not condensated |
| CPU | ARM Cortex A8 800 MHz | ARM Cortex A8 800 MHz |
| Flash memory | 512 MB | 512 MB |
| Access memory | 128 MB DDR3 RAM | 128 MB DDR3 RAM |
| Certification | CE, UL / NEMKO | CE, UL / NEMKO |

Network interface type CS141

3 109 30 - 3 109 31 - 3 109 32 - 3 109 33 - 3 109 34 - 3 109 35

2. FUNCTION OVERVIEW OF THE CS141 INDUSTRIAL



3. TECHNICAL DATA OF THE CS141 INDUSTRIAL

| Technical data | CS141M (external version) | CS141M SK (internal version) |
|--------------------------------------|------------------------------------|------------------------------------|
| Power supply | 12V (min. 9V, max 30 V DC), 150 mA | 12V (min. 9V, max 30 V DC), 150 mA |
| Size (W x D x H), Weight | 69 x 126 x 35 mm, 210 g | 60 x 120 x 29 mm, 66 g |
| Ethernet | 10/100 Mbit Base-T auto sense | 10/100 Mbit Base-T auto sense |
| RS232 interface | 1 | 1 |
| RS485 interface | 1 | 1 |
| USB interface | 1 | - |
| MODBUS over IP | Yes | Yes |
| Status LED's | Normal green, boot/error led | Normal green, boot/error led |
| SNMP MIB support | RFC 1628 and private extensions | RFC 1628 and private extensions |
| Operating temperature | 0 ÷ 70 °C | 0 ÷ 70 °C |
| Storage temperature | 0 ÷ 70 °C | 0 ÷ 70 °C |
| Max. recommended ambient temperature | 55 °C | 55 °C |
| Humidity | 20 ÷ 95 %C, not condensated | 20 ÷ 95 %C, not condensated |
| CPU | ARM Cortex A8 800 MHz | ARM Cortex A8 800 MHz |
| Flash memory | 512 MB | 512 MB |
| Access memory | 128 MB DDR3 RAM | 128 MB DDR3 RAM |
| Certification | CE, UL / NEMKO | CE, UL / NEMKO |